



# MORRIS

## STAND FAN INSTRUCTIONS MANUAL



**Models: MFS-16243 / MFS-16244**

*Please read these instructions carefully and store them future reference*

## SAFETY INSTRUCTIONS

When using electrical appliances, basic precautions should always be followed to reduce the risk of fire, electric shock and injury to persons, including the followings:

1. To prevent fire or shock hazard, **DO NOT** expose this appliance to rain or moisture.
2. Dangerous high voltages are present inside this enclosure. To avoid electric shock, **DO NOT** open the cabinet, refer servicing to qualified personnel only.
3. This appliance is intended for household use only and not for commercial, industrial or outdoor use. Other - not recommended - use may cause fire, electric shock or injury.
4. Ensure the fan is not placed near drapes, curtains, or any objects that may be drawn into the fan.
5. To protect against fire, electrical shock and injury to persons, do not immerse the unit, plug or cord in water or spray it with liquids.
6. The appliance shall not be exposed to dripping or splashing and no objects filled with liquids, such as vases, shall be placed on the product.
7. No naked flames sources, such as candles, should be placed on the product.
8. Ventilation should not be impeded by covering the ventilation openings. Slots and opening are provided for ventilation to ensure reliable operation of the product and to protect it from overheating.
9. Care required with the use of this appliance in tropical climates. Do not use it to temperatures over 40 °C.
10. Place the fan on a stable level and dry surface when operating to avoid overturning.
11. Only connect to a suitably AC 220-240V~50Hz mains socket.

12. Do not operate the fan in the presence of explosive and / or flammable fumes. Do not place the fan or any parts near an open flame, cooking or other heating appliance.
13. Do not operate the fan with a damaged cord or plug, after a malfunction or if it is dropped or damaged in any manner.
14. Do not operate the fan without the fan grilles properly in place.
15. Do not place the fan close to an open window. Rain splashing on the fan could cause an electric shock hazard.
16. Do not let the power cord hang over the edge of a table or counter or let it touch any hot surfaces.
17. Do not insert or allow foreign objects to enter the grille openings as this may cause damage to the appliance.
18. Do not use the fan if grille becomes damaged or loose.
19. This appliance can be used by children aged from 8 years and above and persons with reduced physical, sensory or mental capabilities or lack of experience and knowledge if they have been given supervision or instruction concerning use of the appliance in a safe way and understand the hazards involved. Children shall not play with the appliance. Cleaning and user maintenance shall not be made by children without supervision.
20. Children of less than 3 years should be kept away unless continuously supervised. Children aged from 3 years and less than 8 years shall only switch on/off the appliance provided that it has been placed or installed in its intended normal operating position and they have been given supervision or instruction concerning use of the appliance in a safe way and understand the hazards involved. Children aged from 3 years and less than 8 years shall not plug in, regulate and clean the appliance or perform user maintenance.

21. Switch the fan OFF and unplug it from the outlet when it is not in use, when moving fan from one location to another and before cleaning.
22. To disconnect, grip the plug and pull it from the wall outlet. Never pull by the cord.
23. Do not attempt to repair, disassemble or modify the appliance. There are no user-serviceable parts inside. Refer all servicing to qualified service personnel.

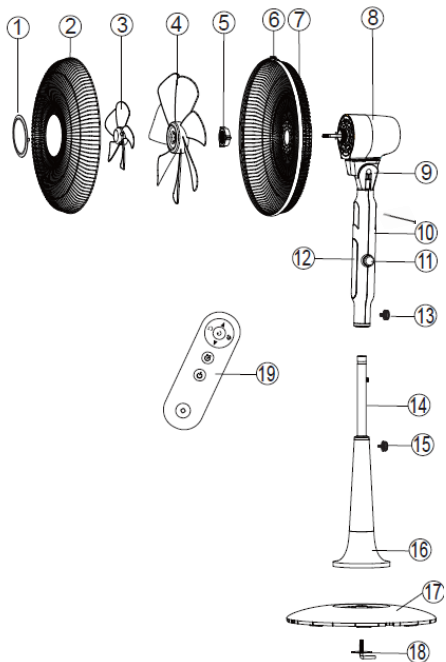
## FOR HOUSEHOLD USE ONLY

**SPECIFICATIONS:**      Model: MFS-16243 / MFS-16244  
 Product: Stand Fan      Power: DC 40W  
                                  Voltage: 220V-240V / 50Hz

- \* The pedestal fan may only be used, if it is fully assembled. Check all screw / plug connections at regular intervals. Re-tighten loose screws and ensure that plug connections are properly adjusted.

### OVERVIEW OF APPLIANCE

1. Front Board
2. Front Grill
3. Small Blade
4. Big blade
5. Rear Grill Lock Nut
6. Grill Ring
7. Rear Grill
8. Motor
9. Motor Holder
10. Main Body / Mosquito killer tablet slot
11. Speed Knob
12. Control Panel
13. Main Body Fixed Screw
14. Holder Pipe
15. Holder Fixed Screw
16. Pipe Holder
17. Base
18. Base Fixed Screw
19. Remote Control



# ASSEMBLY INSTRUCTIONS

1. Remove all the parts from the packing box.

2. Attach the telescopic tube (column) to the base. Secure by tightening the nut on the base. Use the screw/nut provided to assemble the column parts to the base. Adjust the column to the height and screw / secure with the fixed base screw (fig. 1,2).

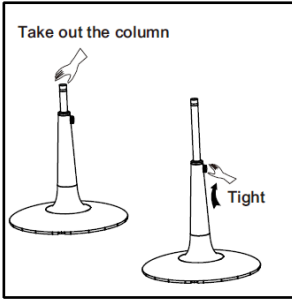


fig. 1

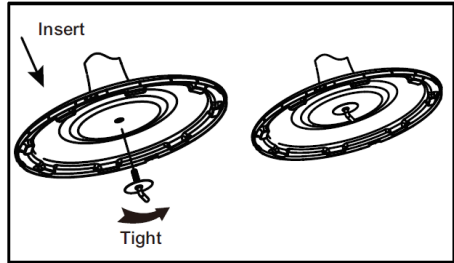


fig. 2

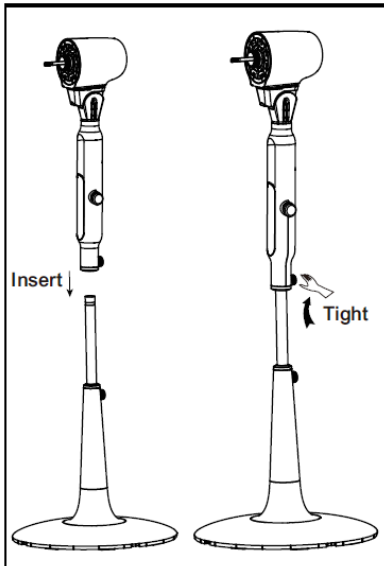


fig. 3

4. Place the rear grill in front of the motor and secure with its nut (fig. 4).

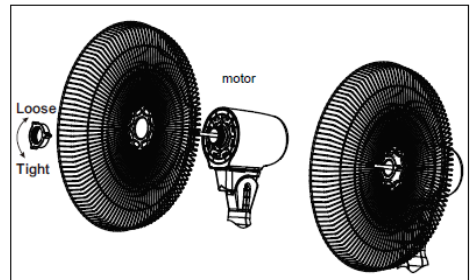


fig. 4

# ASSEMBLY INSTRUCTIONS

5. Apply the big blade to the motor shaft.  
Then install the small blade and secure by tightening counterclockwise, as shown at fig. 5.

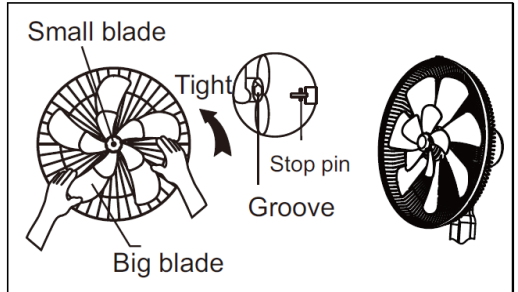


fig. 5

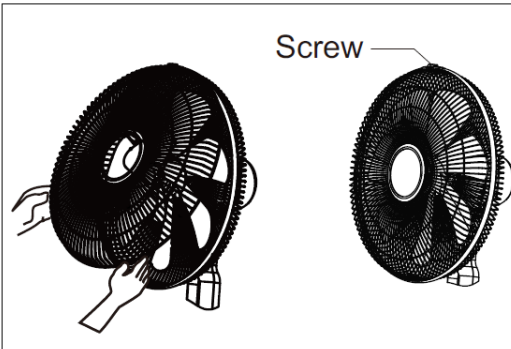
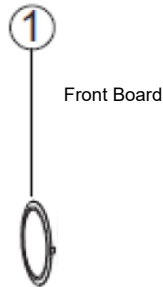


fig. 6

6. Connecting the front with the rear grilles:

- \* Snap the front board onto the front grille
- \* Install the grille ring to join the 2 grilles
- \* Align and fix by the small screw on top, as shown at fig. 6.



## ATTENTION!

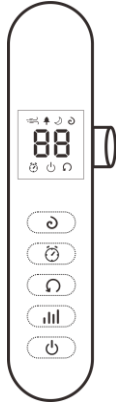
Before using the fan make sure that it is on a flat and stable surface. Damage may occur if it is placed on inclined surface.

Then insert the plug on the socket.

The unit will emit a short "BEEP" sound indicating that power is supplied.

For your convenience, the unit can be operated by using control panel in the main body or by using the - included in the package - remote control.

## Control panel



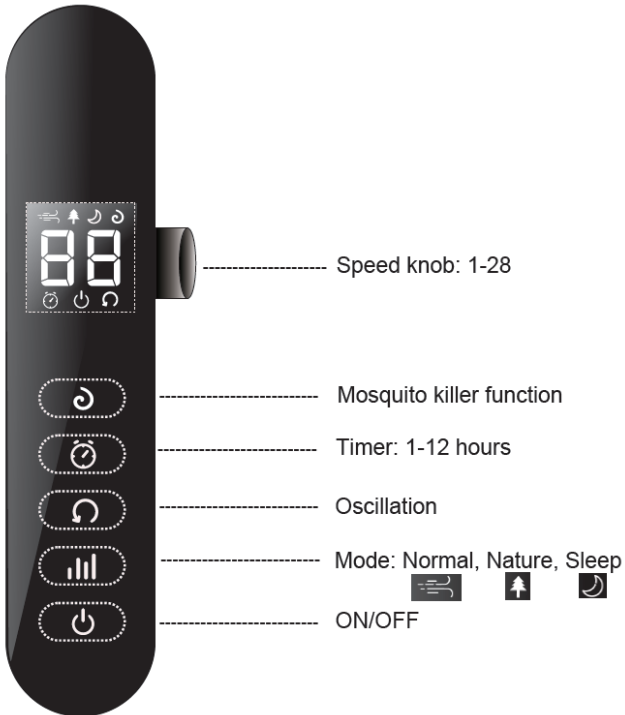
## Remote Control



Remote control is supplied with battery inside.

Remove the transparent sheet from the battery cover before the use of the remote control.

If the battery has run out, it must be replaced with the same type, following the drawing on the back of the remote control.



## ON/OFF Button:



- Press the button to select the power on or power off.
- The indicator light will light up when power is on and light off when power is off.

## TIMER Button:



- While the unit is operating, you can set the timer to switch the fan off automatically.
- Timer can be set from 1 hour - 12 hours; indicator will light up in the control panel.
- The unit will be powered off automatically after the setting time is reached.

## MOSQUITO Button:



- Put the mosquito tablet into the tablet slot on the back side of the fan.
- Press the button; indicator will light up on the control panel.
- Press again, the indicator light will turn off and function will stop.

**NOTE:** During this function, the unit retains the speed at the higher level (28).

## OSCILLATION Button:



- Press the oscillation button to activate the automatic oscillation from right to left. The related indicator light will light up in the control panel.
- Press again the oscillation button to deactivate the automatic oscillation; the indicator light will turn off at the control panel.

## MODE Button



- While the unit is operating, you can select the working mode.
- For mode indicator lights (according to each mode), please refer to the sketches above.
- If mode indicator light is off, the fan working mode will turn into 'Normal'.

**Note:** The fan speed is setting by fixed program when the unit is selected in 'Sleep' or 'Nature'.

## SPEED Knob:

- There are 28 available speeds. The indicator light shows sequentially from 1 to 28 depending on the desired setting.

**Note:** 1-9 = low speed, 10-18 = medium speed, 19-28 = high speed.

- Only while the unit is operating in 'Normal' mode, the fan speed can be selected by turning the knob.

**Remark:** When the device is operating in 'Sleep' or 'Nature' mode, no speed selection can be made. So if while operating in 'Sleep' or 'Nature' mode the user tries to change the speed, then the current mode ('Sleep' or 'Nature') will be disabled and unit will automatically switch to 'Normal' mode.



## CLEANING AND MAINTENANCE

**NOTE:** Before cleaning the appliance always disconnect the power plug from the receptacle.

1. **DO NOT** dip the device in water, or splash it with any other liquids.
2. **DO NOT** use solvents or any other chemical products for cleaning it. When you do not use it, after cleaning it, store the fan in a dry place.
3. At the end of the season - when you stop using the fan - wipe off any dust to keep it in good condition for the next season. If possible, disassemble the grille and remove the blades, and then clean them with a soft damp cloth.

## NOTICE ABOUT RECYCLING



Your product is designed and manufactured with high quality materials and components which can be recycled and reused. This symbol means that electrical and electronic equipment, at their end-of-life, should be disposed of separately from your household waste.

Please dispose of this equipment at your local community waste collection / recycling centre.

In the European Union there are separate collection systems for used electrical and electronic products.

Please help us to conserve the environment we live in!

## DECLARATION OF CONFORMITY

Herewith, Kalliopi Karyda & Co Lp states that this product, complies with the requirements of below directives:

EMC-Directive: 14 / 30 / EU

Low Voltage Directive: 14 / 35 / EU

ErP Directive 09 / 125 / EC

CE Marking: 93 / 68 / EEC

RoHS Directive: 11 / 65 / EU & 15 / 863 / EU

The detailed declaration of conformity can be found at [www.morris.gr](http://www.morris.gr)



### Exclusive importer in Greece:

Kalliopi Karyda & Co., LP

87A, 17<sup>th</sup> Noemvriou str, P.C. 55534  
Pylea Thessaloniki – Greece

T: +302316006600 | F: +302316006650

[www.morris.gr](http://www.morris.gr)