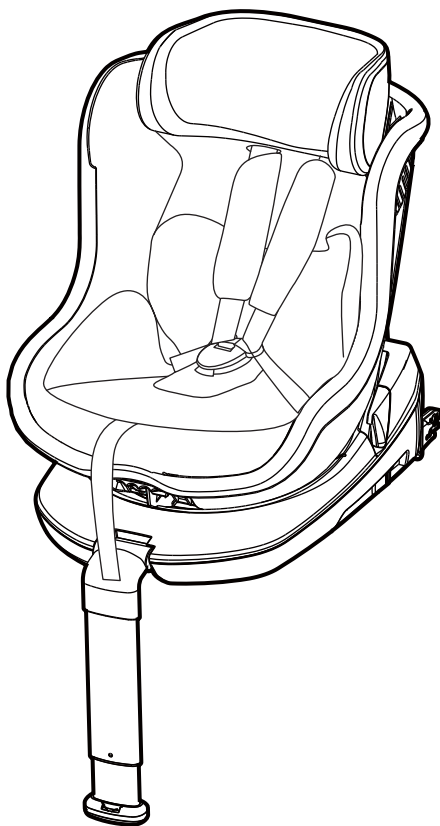


**IMPORTANT! KEEP THIS MANUAL FOR FUTURE REFERENCE**

**INSTRUCTION MANUAL  
FOR USE OF CAR SEAT "TOLEDO"**

**CAR SEAT  
TOLEDO**



This child restraint system **chipolino** is designed and manufactured in compliance with the requirements of Regulation 44 of the United Nations Economic Commission for Europe concerning the safe transportation of children, the provisions of the product safety directive 2001/95/EU of the European Parliament and The Council and Directive 91/671/EEC "Compulsory use of seat belts and child restraints systems for child occupants of power driven vehicles" of the European Parliament and The Council.

## NOTICE

This is a SEMI-UNIVERSAL INTEGRAL ROTATABLE Child Restraint System. It is approved to Regulation No 44, 04 series of amendments for general use in vehicles (as detailed in the child restraint handbook). Seat positions in other cars may also be suitable to accept this child restraint. It can be used in two ways:

### 1. Installed with ISOFIX ANCHORAGES and SUPPORT LEG

- This is an ISOFIX CHILD RESTRAINT. It is approved to Regulation No 44, 04 series of amendments, for general use in vehicles fitted with ISOFIX anchorages systems (as detailed in the child restraint handbook).
- It will fit vehicles with positions approved as ISOFIX positions (as detailed in the vehicle handbook), depending on the category of the child seat and of the fixture.
- The mass group and the ISOFIX size class for which this device is intended is: GROUP 0+ (0-13 kg) and GROUP I (9-18 kg), class B1 and D.

### 2. Installed with 3-POINT BELT AND SUPPORT LEG

Only suitable if the approved vehicles are fitted with 3-point safety-belts approved to UN/ECE Regulation No. 16.



**DO NOT FORGET THAT NO RESTRAINT SYSTEM CAN PROVIDE ABSOLUTE PROTECTION IN CASE OF A CRASH OR ROAD ACCIDENT! DRIVE WITH CARE WHEN THERE IS A CHILD IN YOUR VEHICLE!**

**IN ORDER TO ENSURE THE SAFETY OF YOUR CHILD, FOLLOW EXACTLY THE INSTRUCTIONS AND SAFETY RECOMMENDATIONS IN THIS MANUAL!**

**MISUSE OF THE CAR SEAT WILL CONTRIBUTE TO REDUCING ITS SECURITY AND SAFETY FEATURES! FAILURE OF THE GUIDELINES OF THIS INSTRUCTION INCREASES THE RISK OF SERIOUS INJURY OR DEATH!**

## PLACE OF THE CAR SEAT IN THE VEHICLE



**IMPORTANT!** This restraint system is intended for use only in vehicles equipped with ISOFIX anchorages, complying with the requirements of Directive № 14 of ECE

**CAUTION!** Do not place the restraint system "REARWARD FACING" on

a seat equipped with air bag! This may result in death or serious injury! Review the instructions of the car seat for information about airbags and conditions of transportation of children.

**CAUTION!** This restraint system is suitable if the approved vehicles are fitted with 3-point safety-belts approve to UN/ECE Regulation No. 16.



**?1** Never use in REARWARD facing position on passenger seats equipped with air bag which cannot be deactivated.

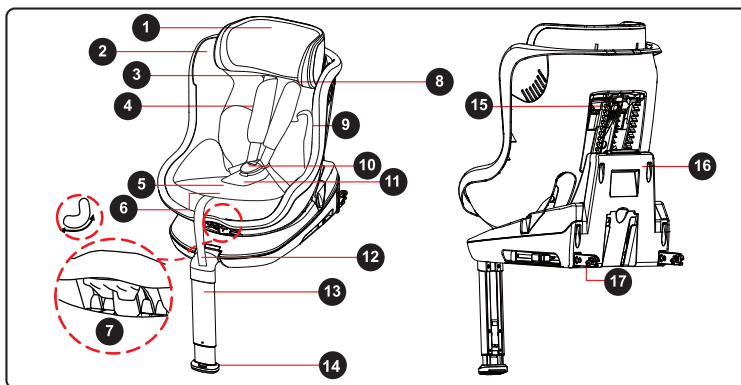
**?2** To be used ONLY on passenger seats equipped with ISOFIX.

- **CAUTION! NEVER LEAVE YOUR CHILD UNATTENDED!**
- **CAUTION! THE CAR SEAT MUST BE INSTALLED ONLY ACCORDING TO THE DESCRIBED INSTRUCTIONS IN THIS MANUAL. IT IS DANGEROUS TO USE ANCHOR POINTS OTHER THAN THE ONES GIVEN IN THIS MANUAL!**
- **CAUTION! DO NOT INSTALL THE CAR SEAT IN FORWARD FACING POSITION BEFORE THE CHILD REACHES 9 KG!**
- **CAUTION! THE SEAT SAFETY BELTS MUST BE PROPERLY ADJUSTED ACCORDING TO CHILD'S HEIGHT, NOT TWISTED AND SNUG WELL AGAINST BABY'S BODY.**
- **CAUTION! THIS CHILD RESTRAINT SHOULD NOT BE MODIFIED OR ADAPTED WITH NEW FITTINGS, WITHOUT PREVIOUS AUTHORIZATION BY THE COMPETENT AUTHORITY.**
- **CAUTION! KEEP AWAY FROM FIRE!**
- Installation in the vehicle and securing the child in the car seat to be done only by adult!
- The hard parts and the parts of the child restraint made of plastic should be located and installed so that when the vehicle is in normal use, they can not be trapped by a sliding seat or in a door of the vehicle.
- The 3-point safety belt of the vehicle must be well fitted, not pinched with the door, twisted or touching sharp edges and objects.
- Do not allow the safety belts of the car seat and the vehicle to be twisted, frayed or torn, latches and locks (buckles) must be always in good order and firmly fixed.
- If you find uncertainty or defect in the construction, latches, straps or locking mechanisms of the car seat, discontinue usage until removal of the damaged parts and replacement with new ones.
- After a violent impact the car seat and belts may be damaged. therefore, it is recommended to replace the car seat with new one.
- Never use a second hand child restraint. it may have suffered structural damage, which may make the child restraint extremely dangerous.
- Do not use this car seat without its seat cover and do not replace it with a new one, unless supplied by the manufacturer. The fabric parts are integral parts of the restraint system and its safety features!
- Always make sure that you are not carrying any unsecured objects, especially on the back shelf, which, in case of an accident, may injure the car's occupants.
- Do not put additional pads except the ones supplied from the manufacturer! Placing additional pads may obscure the safety of your child.
- Do not use spare parts and other components not supplied by the manufacturer. The manufacturer assumes no responsibility for safety in the event that are used spare parts other than original.
- It is recommended to cover the car seat if the vehicle is parked under strong sun shine – extreme sun exposure will make the plastic to deteriorate and the fabric to fade. Please, check that the child restraint has not become too hot before placing your child seat.
- The car seat does not replace the child's cot or bed. When a child needs a sleep, you have to place him in a suitable baby stroller, baby crib or bed.
- Do not attach objects with long cords or strings on the car seat in order to avoid danger of suffocation!
- Never place a child seat on beds, couches or similar soft surfaces!
- Do not allow children to play with the product!
- Do not remove stickers and warnings – they contain important information!
- The packaging of the product must be kept out of the reach of children at the time of and after unpacking in order to avoid the risk of strangulation!

## PRODUCT FEATURES

- **Semi universal" integral rotating and ISO FIX child restraint system, suitable for child weighing up to 18 kg;**
- This car seat may be installed in two ways: using ISOFIX and support leg or using the vehicle 3-point safety belt and support leg.
- For Group 0+ (0-13 kg) install the car seat in reward facing position, the car seat "facing backwards";
- For group I (9-18 kg) install the car seat in forward facing position, the car seat "facing forwards";
- ISOFIX system;
- Car seat can rotate at 360° on the plastic base;
- Anti-rotation device (support leg) to limit the rotation in case of front impact;
- Backrest recline positions;
- Headrest height adjustment;
- Safety harness height adjustment;
- 5-point safety harness;
- Additional soft shoulder pads;
- Removable upholstery;

## MAIN PARTS DIAGRAM



1	Headrest	10	Safety harness lock buckle
2	Side head protection	11	Soft crotch belt pad
3	Shoulder belts slots	12	Harness length adjuster strap
4	Shoulder belts soft pads	13	Anti-rotation device (Support leg)
5	Shoulder belts loosening button ("press")	14	Support leg indicator
6	Recline position button	15	Headrest and harness height adjuster
7	Lever for rotating the seat	16	Plastic base
8	Shoulder belts	17	ISOFIX attachment
9	Soft cushion (suitable for babies under 6 months)		

## INSTRUCTION FOR USE

### IMPORTANT!

- Follow exactly the instructions and safety recommendations in this manual.
- Check the security of fixing after each operation!
- ALWAYS CHECK THE SECURITY OF FIXING OF THE SAFETY BELTS!

#### 1 – SAFETY HARNESS BUCKLE

#### 2 – LOOSENING AND TIGHTENING THE HARNESS

#### 3 – ADJUSTING THE HEADREST AND HARNESS HEIGHT

**IMPORTANT:** When the headrest height is changed this automatically changes the shoulder straps height.

**IMPORTANT!** Shoulder belts must be at child's shoulders height

#### 4 – ANTI-ROTATION DEVICE

#### 5 – ADJUSTING THE BACKREST RECLINE

#### 6 – ROTATING THE SEAT AT 360° ON THE BASE

#### 7 – OPTION 1: INSTALLING THE SEAT ON THE VEHICLE PASSENGER SEAT USING ISOFIX AND SUPPORT LEG.

**IMPORTANT!** After the ISOFIX attachments are installed on the ISOFIX anchorages, along with the click sound, the release indicator must be green, which confirms the complete installation of the car seat.

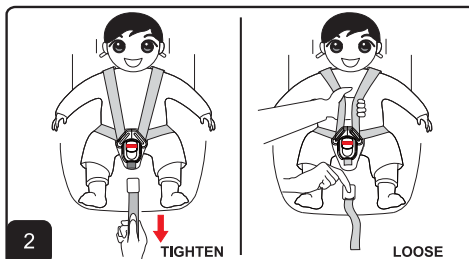
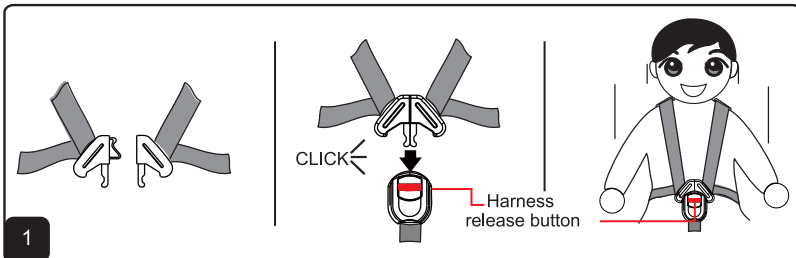
#### 8 – OPTION 2: INSTALLING THE SEAT ON THE VEHICLE PASSENGER SEAT USING THE 3-POINT VEHICLE SAFETY BELT AND SUPPORT LEG.

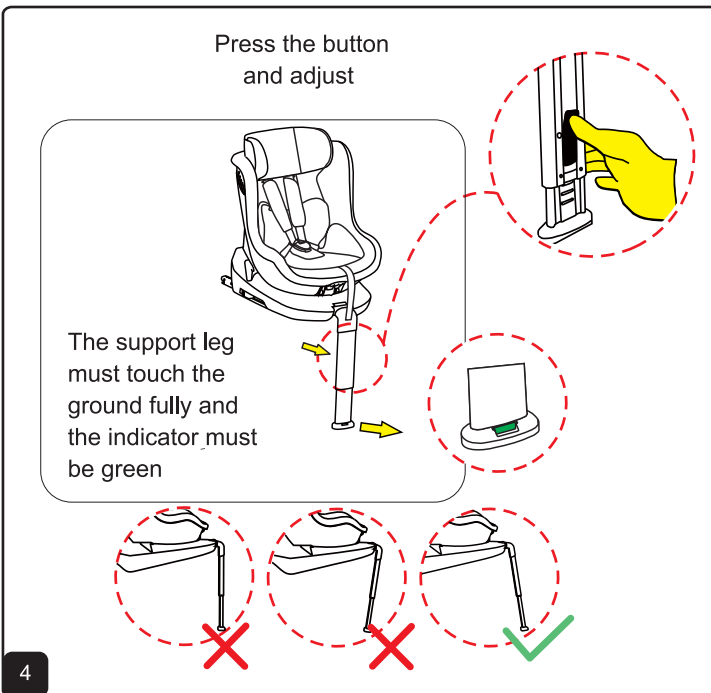
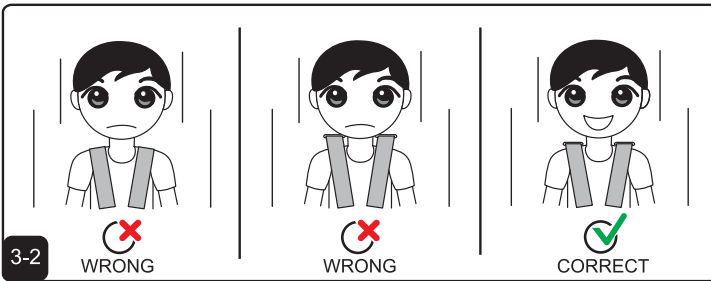
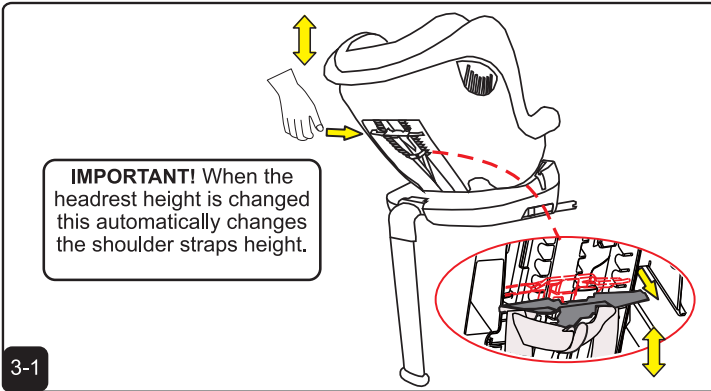
#### 9- USE OF THE CAR SEAT

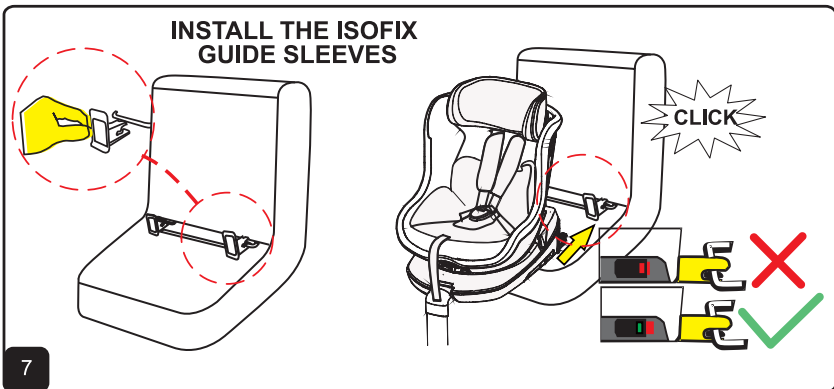
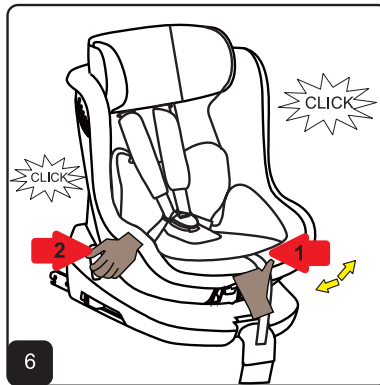
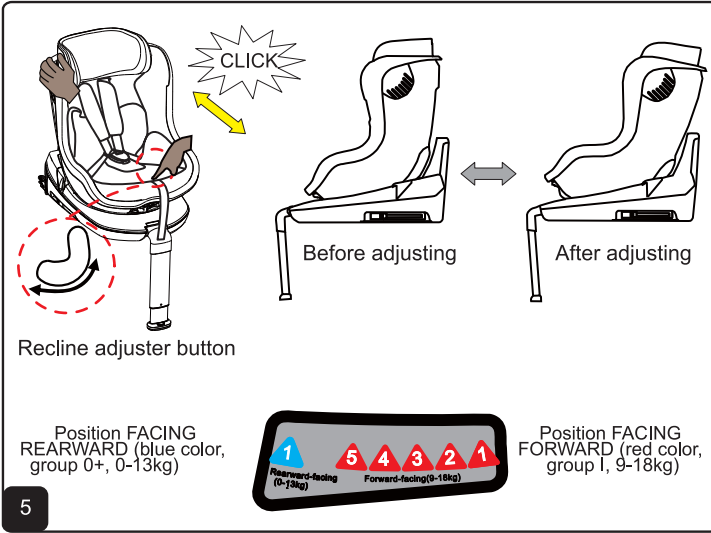
#### 10 – PUTTING AND REMOVAL OF UPHOLSTERY

- Unfasten the shoulder pads and remove them;
- Split the shoulder belts from the join plate;
- Unlock and remove the buckle;
- Remove the upholstery.

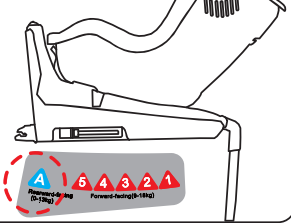
To assemble the upholstery, repeat the above steps in reverse order.







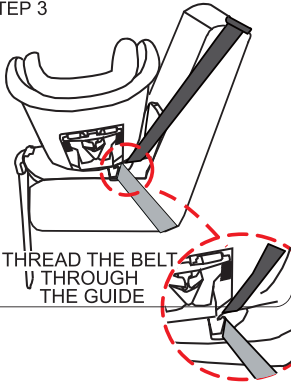
STEP 1  
REARWARD FACING  
POSITION –  
BLUE COLOR



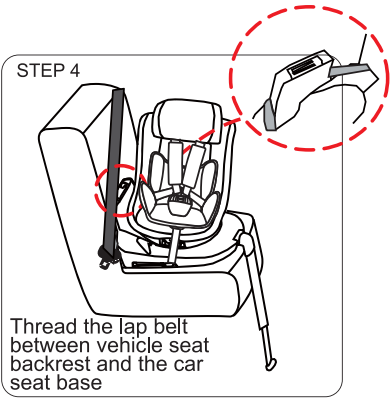
STEP 2  
DIAGONAL BELT



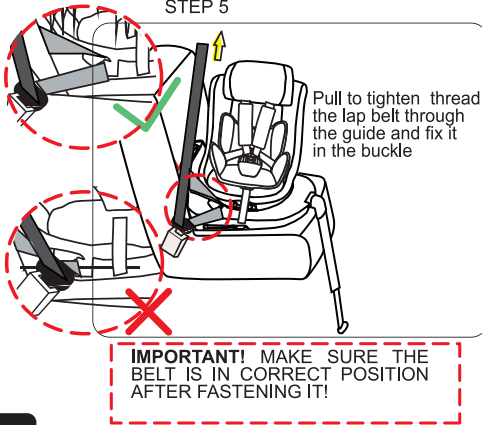
STEP 3



STEP 4

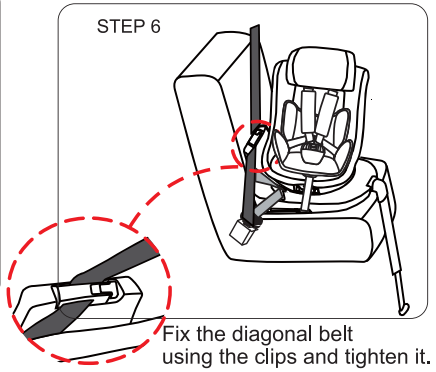


STEP 5


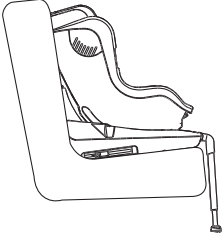
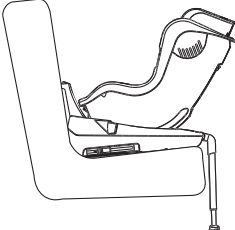


**IMPORTANT! MAKE SURE THE BELT IS IN CORRECT POSITION AFTER FASTENING IT!**

STEP 6





		
<ol style="list-style-type: none"> <li>1. Release the belts (fig. 2) and place the child</li> <li>2. Adjust the headrest height (fig.3)</li> <li>3. Tighten the belts (fig. 2)</li> </ol>	<p>GROUP I (9-18kg)</p>	<p>GROUP 0+ (0-13kg)</p>
<p>When INSTALLING</p>	<p>When DRIVING</p>	
<p><b>⚠ IMPORTANT</b></p> <ol style="list-style-type: none"> <li>1. Do not leave the child in the car seat in this position during driving. There is no locking effect in this position.</li> <li>2. Turn the seat to the direction shown in the corresponding weight group</li> </ol>	<p><b>⚠ DO NOT INSTALL THE CAR SEAT IN FORWARD FACING POSITION BEFORE THE CHILD REACHES 9 KG!</b></p>	

## CLEANING AND MAINTENANCE INSTRUCTIONS

- Clean the plastic parts and metal parts with damp cotton cloth or sponge and mild soap.
- The upholstery and soft pads clean with damp cotton cloth with mild detergent!
- Do not tumble dry! Do not iron!
- Do not use abrasive, bleach or other aggressive detergents.
- Always after cleaning leave the car seat fully dry and after that use it or store it.
- Harnesses must be cleaned with damp cloth and mild soap!
- Do not wet or remove the stickers. They contain important information!
- Always store your car seat indoors – on dry and clean place. Do not expose to direct environment influence - sun, rain, moisture and high temperature intervals.
- Please, contact your authorized dealer for problems connected with the use or repair

**Fabric:**

**Outer:** PU leather, polyester

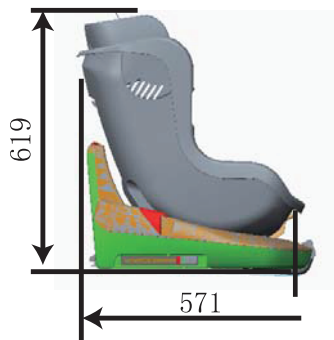
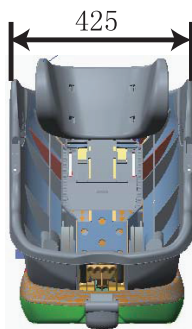
**Filling:** 100% polyester



**Used materials:** plastic, metal, PU leather, textile.

## MAIN TECHNICAL FEATURES

- Дължина: 571 mm
- Ширина: 425 mm
- Височина: 619 mm
- Тегло: 9,5 kg.



STKTO01xxxx

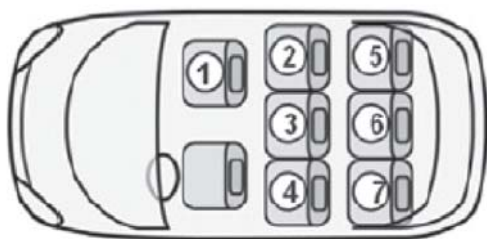
LIST OF VEHICLE TYPES WITH ISOFIX ANCHORAGE POINTS  
For use of semi-universal child restraint ISOFIX system

\*This car seat may be appropriate to use in other vehicles with ISOFIX anchorage points

Manufacturer	Model	Year of construction	Position	Manufacturer	Model	Year of construction	Position
Alfa Romeo	147	2000+	2, 4	Audi	A1	2010+	2, 4
	156	2008+	2, 4		A2	1999+	2, 4
	GT	2004+	2, 4		A3	2004+	1, 2, 4
BMW	3er	2005+	2, 4		A3	1999+	2, 4
	3er	1995+	2, 4		A4, S4, RS4	2004+	2, 4
	6er	2003+	2, 4		A4, S4, RS4	2000+	1, 2, 4
	7er	2001+	2, 4		A4, S4, RS4	1994-2001	2, 4
	X3	2003+	2, 4		A5	2007+	1, 2, 4
	X5	2000+	2, 4		A6, S6, RS6	2004+	1, 2, 4
	X6	2008+	2, 4		A6, S6, RS6	1997+	2, 4
Z4	2002-2008	1	A7		2010+	2, 4	
Cadillac	No approved Model found for this manufacturer				A8, S8	2002+	2, 4
Chevrolet	Aveo	2006+	2, 4		Q3	2011+	2, 4
	Captiva	2006+	2, 4		Q5	2008+	1, 2, 4
	Epica	2006+	2, 4		Q7	2005+	2, 4
	HRV	2007+	2, 4		RS3	2010+	2, 4
	Kalos	2002+	2, 4		300C	2004+	2, 4
	Lacetti	2004+	2, 4	Sebring	2003+	2, 4	
	Malibu	2011+	2, 4	Voyager	2008+	2, 4, 5, 7	
	Nubira	2005+	2, 4	Voyager	2001-2007	2, 4	
	Spark	2010+	2, 4	Duster	2010+	2, 4	
Tacuma	2000+	2, 4	Dacia	Lodgy	2012+	2, 4	
Citroën	Berlingo	1999+	2, 4	Logan	2004+	2, 4	
	C-Crosser	2007+	2, 4	Sandero	2008+	2, 4	
	C2	2003+	2, 4	Copen	2002+	1	
	C3	2002+	2, 4	Cuore	2005+	2, 4	
	C4	2004+	2, 4	Materia	2006+	2, 4	
	C4GrandPicasso	2006+	2, 4	Sirion	2005+	2, 4	
	C5	2001+	2, 4	Terios	2006+	2, 4	
	C6	2006+	2, 4	Travis	2006+	2, 4	
	C8	2002+	2, 4, 5, 7	Daiwo	No approved Model found for this manufacturer		
	Jumper	2007+	2, 4, 5, 7	Dodge	Avenger	2007+	2, 4
Jumpy	2006+	2, 4, 5, 7	Caliber	2006+	2, 4		
Kia	Xcara	1999+	2, 4	Durango	2004+	2, 4	
				Nitro	2007+	2, 4	
Ferrari	No approved Model found for this manufacturer			Bravo	2007+	2, 4	
Ford	C-MAX	2003+	2, 4	Croma	2005+	2, 4	
	Fiesta	2008+	2, 4	Doblo	2010+	2, 4	
	Galaxy	2006+	2, 4	Idea	2005+	2, 4	
	Grand C-MAX	2010+	2, 4	Multipla	2004+	2, 4	
	Ka	2009+	2, 4	Panda	2003+	2, 4	
	Maverick	2001+	2, 4	Scudo	2007+	2, 4, 5, 7	
	Mondeo	2000+	2, 4	Sedici	2006+	2, 4	
	Ranger	2012+	2, 4	Stilo	2001+	2, 4	
	S-MAX	2010+	2, 4	Ulysse	2002+	2, 4, 5, 7	
	Transit	2006+	3, 4	Hummer	No approved Model found for this manufacturer		
Honda	Accord Tourer	2008+	2, 4	Accent	2006+	2, 4	
	Civic	2001+	2, 4	Grandeur	2005+	2, 4	
	FR-V	2005+	2, 4	i10	2008+	2, 4	
	Inight	2009+	2, 4	i30	2011+	2, 4	

	Jazz	2002+	2, 4	Hyundai	i40	2011+	2, 4
	Legend	2006+	2, 4		ix20	2010+	2, 4
	Stream	2000+	2, 4		ix35	2010+	2, 4
Jaguar	X-Type	2001+	2, 4		Matrix	2002+	2, 4
	XJ	2003+	2, 4		Santa Fe	2002+	2, 4
Jeep	Cherokee	2005+	2, 4		Sonata	2001+	2, 4
	Compass	2006+	2, 4	Terracan	2002+	2, 4	
	Patriot	2007+	2, 4	Tucson	2004+	2, 4, 5, 7	
	Wrangler	2007+	2, 4	Delta	2008+	2, 4	
KIA	Carens	2002-2005	2, 4	Lancia	Lancia	2011+	2, 4, 7
	cee'd	2005+	2, 4		Musa	2006+	2, 4
	Cerato	2004+	2, 4		Phedra	2002+	2, 4, 5, 7
	Magentis	2002+	2, 4		Thezis	2002+	2, 4
	Opirus	2003+	2, 4		Ypsilon	2003+	2, 4
	pro cee'd	2007+	2, 4		Defender	2007+	2, 4
	Rio	2005+	2, 4	Discovery 3	2004+	2, 4	
	Sedona	2002+	2, 4	Freelander	2006+	2, 4	
	Sorento	2002+	2, 4	Land Rover	GS	2000+	2, 4
	Soul	2008+	2, 4		IS	2001+	2, 4
	Sportage	2005+	2, 4		LS	2007+	2, 4
	Venga	2009	2, 4		RX	2003+	2, 4
	Maserati	No approved Model found for this manufacturer			Lexus	325	1994+
			323F	2001+		2, 4	
			CX-5	2011+		2, 4	
Mercedes-Benz	A-Klasse	2001+	2, 4	Mazda	CX-7	2007+	2, 4
	B-Klasse	2005+	2, 4		Mazda3	2003+	2, 4
	C-Klasse	2001+	2, 4		Mazda5	2005+	2, 4
	CLDSportcoup	2008+	2, 4		Mazda6	2002+	2, 4
	CLK	2002+	2, 4		MPV	1999+	2, 4
	CLS	2004+	2, 4	MX-5	2002+	1	
	E-Klasse	2002+	2, 4	Mini	Cooper	2006-2009	2, 4
	GL-Klasse	2006+	2, 4		MINI Clubman	2007+	2, 4
	GLK	2008+	2, 4		One	2001+	2, 4
	M-Klasse	2001+	2, 4	Mitsubishi	ASX	2010+	2, 4
	R-Klasse	2005+	2, 4		Colt	2005+	2, 4
	S-Klasse	2002+	2, 4		Grandis	2004+	2, 4
	Sprinter	2006+	2, 4, 5, 7		L200	2006+	2, 4
	Vaneo	2002+	2, 3, 4		Lancer	2003+	2, 4
	Viano	2003+	2, 4, 5, 6, 7		Outlander	2003+	2, 4
Vito	2006+	2, 3, 5, 6	Pajero		2003+	2, 4	
Nissan	Almera	2000+	2, 4		Shogun	2006+	2, 4
	Murano	2005+	2, 4	Antara	2006+	2, 4	
	Navara	2005+	2, 4	Astra	2004+	2, 4	
	Note	2006+	2, 4	Astra Caravan	1998+	2, 4	
	Pathfinder	2005+	2, 4	stra Sports Tour	2009+	2, 4	
	Pixo	2009+	2, 4	Astra Twin Top	2007+	2, 4	
	Primastar	2001+	2, 4	Combo	2007+	2, 4	
	Primera	2002+	2, 4	Opel	Corca	200+	2, 4
	Tiida	2008+	2, 4		Insignia	2008+	2, 4
X-TRAIL	2001+	2, 4	Meriva		2002+	1, 2, 4	
Peugeot	107	2005+	2, 4		Signum	2003+	1, 2, 4
	206 CC	2001+	1		Vectra	1995-2001	1, 2, 4
	207	2006+	2, 4	Vivaro	2006+	3, 4	
	208	2012+	2, 4	Zafira	1999-2011	2, 4	
	3008	2009+	2, 4	Pontiac	No approved Model found for this manufacturer		
	307	2001+	2, 4		Porsche	Cayenne	2003+
	307 CC	2003+	2, 4	Panamera		2009+	1, 2, 4
308	2007+	2, 4	Saab	9-3	2002+	2, 4	
308 SW	2008+	2, 3, 4		9-5	2001+	2, 4	
4007	2007+	2, 4					

	407	2004+	2, 4	Seat	Alhambra	1998+	2, 4, 5, 7
	5008	2009+	2, 3, 4		Altea	2004+	2, 4
	508	2010+	2, 4		Aroza	1998+	2, 4
	607	2001+	2, 4		Enzo	2009+	2, 4
	807	2008+	2, 4		Leon	2005+	2, 4
	807	2002+	2, 4, 5, 7		Mii	2011+	2, 4
	Clio	1999+	2, 4		Toledo	1999+	2, 4
	Espace	1999+	2, 3, 4, 5, 7		Citigo	2011+	2, 4
	Fluence	2009+	2, 4		Fabia	1999+	2, 4
	Grand Scénic	2009+	2, 3, 4		Octavia	2004+	1, 2, 4
Renault	Grand Scénic	2004+	1, 2, 4	Octavia	1998+	2, 4	
	Kangoo	1999+	2, 4	Roomster	2006+	2, 4	
	Laguna	2001+	2, 4	Superb	2008+	1, 2, 4	
	Mégane	1999+	2, 4	Superb	2001+	2, 4	
	Mégane CC	2003+	2, 4	Yeti	2009+	2, 4	
	Modus	2004+	2, 4	ForFour	2005+	2, 4	
	Scénic	2003+	1, 2, 4	ForFour	2003-2005	1	
	Trafic	2001+	2, 3, 4, 6	Alto	2009+	2, 4	
	Vel Satis	2002+	2, 4	Jimny	1998+	2, 4	
	Forester III	2008+	2, 4	Splash	2008+	2, 4	
Subaru	Impreza	2000+	2, 4	Swift	2004+	2, 4	
	Justy	2003+	2, 4	SX4	2006+	2, 4	
	Legacy	2002+	2, 4	Vitara	2002+	2, 4	
	Tribeca	2006+	2, 4	Wagon R	2002+	2, 4	
	Auris	2007+	2, 4	C30	2006+	2, 4	
Toyota	Avensis	1998-2002	2, 4	CT0	2006+	2, 4	
	Ayzo	2005+	2, 4	S40	2001-2003	2, 4	
	Corolla	2002+	2, 4	S60	2000+	2, 4	
	Corolla Verzo	2001+	2, 4	S80	200+	2, 4	
	iQ	2009+	2, 4	V40	2000+	2, 4	
	Land Cruiser	2002+	2, 4	V50	2004+	2, 4	
	Previa	1998+	2, 4	V60	2010+	2, 4	
	Prius	2001+	2, 4	V70	2000-2006	2, 4	
	PAV4	2000+	2, 4	XCT0	2002+	2, 4	
	Urban Cruiser	2009+	2, 4	XC90	2003+	2, 4	
	Verzo	2009+	2, 4				
	Yaris	1999+	2, 4				
	VW	Bora	1998+	2, 4			
Caddy		2000+	2, 4				
Fox		2005+	2, 4				
Golf		2007+	2, 4				
Jetta		2005+	2, 4				
Lupo		1998+	2, 4				
New Beetle		1998+	2, 4				
Passat		2000+	2, 4				
Phaeton		2002+	2, 4				
Polo		1999+	2, 4				
Scirocco		2008+	2, 4				
Sharan		2010+	2, 3, 4				
Sharan		1998+	2, 4, 5, 7				
T5		2009+	3, 4				
T5		2003-2009	2, 4, 5, 7				
Tiguan		2007+	2, 4				
Touareg		2010+	2, 4				
Touareg		2002+	1, 2, 4				
Touaran		2003+	2, 4				
up!		2011+	2, 4				







---

1 Golyamokonarsko shosse, Plovdiv, BULGARIA  
[www.chipolino.com](http://www.chipolino.com)