

Rohinson®

VACUUM CLEANER

MODEL: R-1245

INSTRUCTION MANUAL



PLEASE READ THIS MANUAL CAREFULLY BEFORE USING
AND KEEP IT PROPERLY FOR FUTURE USE

Welcome to purchase and use our products.

Safety Cautions:

1. If the supply cord is damaged, it must be replaced by the manufacturer or its service agent or a similarly qualified person in order to avoid a hazard.
2. This appliance is not intended for use by persons (including children) with reduced physical, sensory or mental capabilities, or lack of experience and knowledge, unless they have been given supervision or instruction concerning use of the appliance by a person responsible for their safety.
3. Children should be supervised to ensure that they do not play with the appliance.
4. This appliance can be used by children aged from 8 years and above and persons with reduced physical, sensory or mental capabilities or lack of experience and knowledge if they have been given supervision or instruction concerning use of the appliance in a safe way and understand the hazards involved. Children shall not play with the appliance. Cleaning and user maintenance shall not be made by children without supervision.
5. For the first operation, it is advisable to read the manual carefully beforehand and keep it properly for future use.
6. Before the first operation, make sure the dust cup or the dust bag is properly installed.
7. Make sure the power supply is 230V~ 50Hz。
8. Do not vacuum water and inflammable material.
9. Do not vacuum burning material and ashes.
10. Do not use the machine without a motor protection filter filled.
11. Please change the dust bag immediately when it was damaged.
12. Do not store or use the machine close to high temperature places.
13. Do not let children use the machine in case of danger.
14. If abnormal noise, smell, smoke or any other failure or breakage is found during the operation, you should turn off the switch and unplug it. Then contact with your service center for repair. Do not repair by yourself.
15. The plug must be removed from the power socket before any maintenance or replacement.

Failure clearance

Less vacuum power of the cleaner:

1. If the dust cup is full, please dump and clean all the dust, then continue use.
2. If blockage is found in ground brush, hose or tubes, the machine can be re-operated only after the blockage is cleared away.

CAUTION: Never use the vacuum cleaner without the filters. Vacuum cleaner use only for home and in the inner rooms!

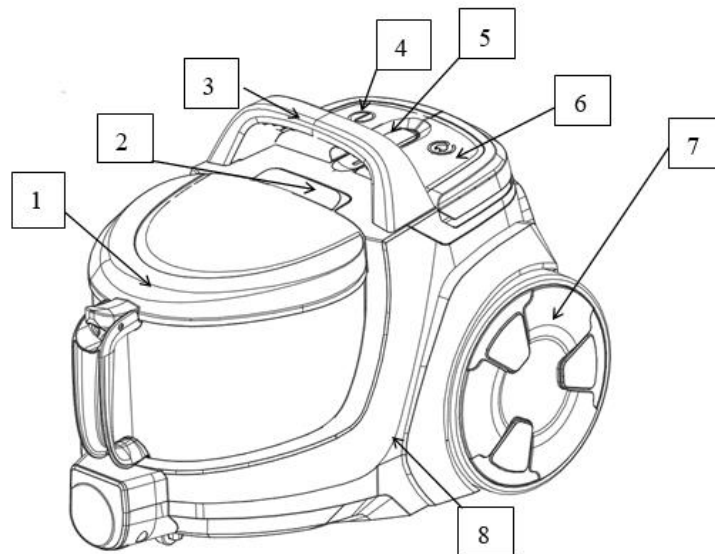
Connection to the mains supply

Check, please, whether the voltage stated on the data plate comply with the data of your house mains supply.

Supply cord

If the supply cord is damaged, it must be replaced by your nearest authorized service department. If the mains cord is damaged, you must have it replaced by a service center authorized by the manufacturer to avoid a hazard.

DESCRIPTION



1. Dust cup
2. Dust cup lock
3. Handle
4. On/off switch button
5. Speed control button
6. Cord retractor button
7. Wheel
8. Main body

Always remove the plug from the power supply before fitting or removing accessories.

Before putting the appliance into service, please check if all filters are inserted correctly.

ROLLING THE CABLE OUT AND UP

Pull out the cable to such a length that easy working is ensured. Now connect the appliance to the main supply. Press the switch to activate the automatic rewinder and hold on the mains plug for safety reason.

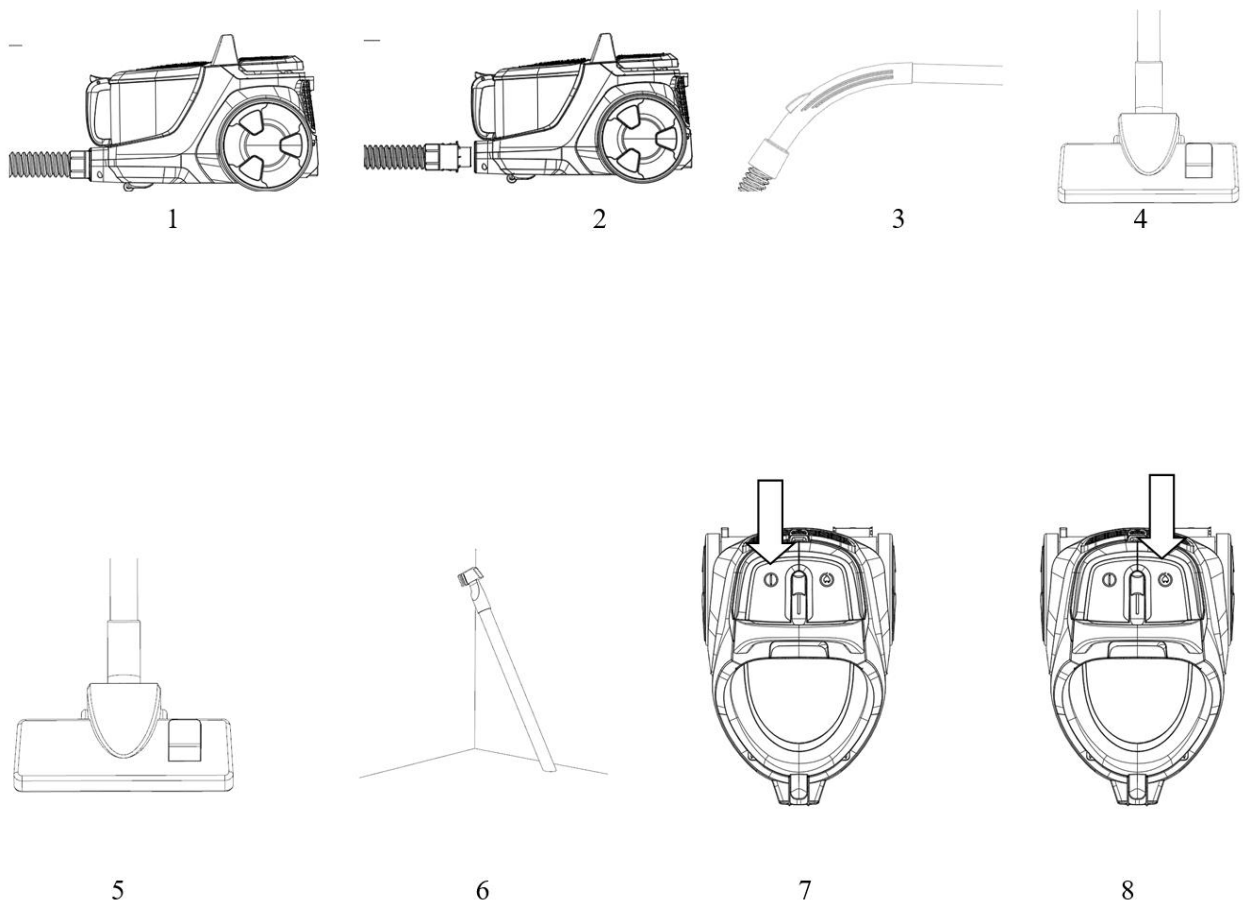
Instruction for use

- Before using the appliance, unwind a sufficient length of cord and insert the plug into the power supply.
- Press the On/Off button to switch the unit on. To stop it press the On/Off button again.
- You can adjust the air flow using the air flow regulator on the flexible hose:
 - decrease power for cleaning curtains, books, furniture, etc.
 - increase power for cleaning floor.

To rewind the cord, press the rewind button and guide the cord with hand to ensure that it does not whip causing damage.

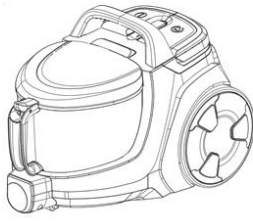
Operation methods:

1. Connects the hose accessories: insert the hose end into the hose socket at the front cover and then hook it. (Fig1)
Remove the hose accessories: press the adaptors at both side of the hose end and then pull the hose accessories. (Fig2)
2. Connect the plastic tube to the curves end of the hose. (Fig3)
3. Connect different nozzle tools to the tube for different cleaning purpose: floor brush (adjusted to the type of ground) for carpet or floor (Fig4,5); combined brush & nozzle for sofa, wall surface, curtain, corner or space between furniture and etc. (Fig6)
4. Turn on the machine: insert the plug of cord into the power socket which conform to that on the label for power supply, and press the on/off switch pedal, the machine could start working (Fig7).
5. Cord rewinding: hold the plug and pull out the cord; press the cord rewinding pedal, that power cord will be drawn in. (Fig8)

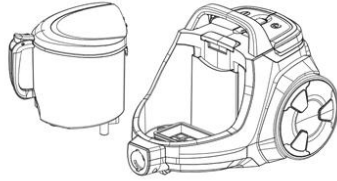


Maintenance

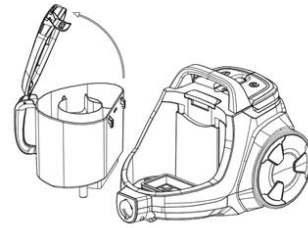
- Clean the dust cup: when the dust cup is full, it is time to clear the dust cup. (Fig.1)
Open the front cover by clipping. (Fig.2)
Take out the cup and clean it. (Fig.3)
After removing the rubbish from the dust cup, put the dust cup back in place. Please ensure that the dust cup has been placed properly.
- Exchange the outlet filter: clip down and remove the outlet cover by hands for exchange of filter. (Fig. 4,5)
- The motor protection filter should be removed and rinsed once a year and can use it after dry. If the filter is damage, a new filter should be replaced. (Fig.6)



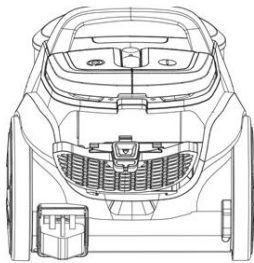
1



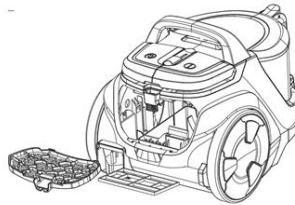
2



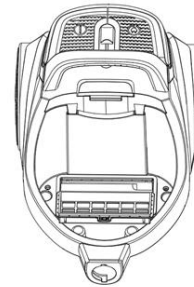
3



4



5



6

NOTES:

Always operate the cleaner with the dust cup whole installed.

If you forget to attach the dust cup or filters or attach them in a wrong manner, the unit will not operate.

CLEANING FILTERS

To ensure the best performance of your appliance, it is important to regularly clean the filters, the bin and check for blockages.

We recommend washing the filters at least once a month and replacing them once a year (You can get them at our authorized services). Filters may need more frequent cleaning and replacement, depending on how often the device is used.

To clean the filters, follow the steps below:

- Shake the filters to remove dust.
- Wash the filters with cold water only.
- Repeat washing the filters until clean water runs.
- Allow the filters to dry completely in a dry area with good air circulation for at least 24 hours.
- Make sure the filters are completely dry before installing them.

CAUTION: Do not clean the filters in a washing machine. Do not use a hair dryer to dry them.

CLEANING THE INNER HEPA MOTOR PROTECTION FILTER

Please follow the above guidelines to clean the inner filter.

With regular cleaning and maintenance of filter, you will achieve good results of cleaning, and hence the longer life of the appliance.

The filter is washable, but please ensure that it is completely dry before use. If the filter is damaged, a new filter should be replaced.

CLEANING THE OUTLET HEPA FILTER

1. Open the grille for air-outlet.
2. When open the grille for air-outlet, the filter for air-outlet is found.
3. Take the filter out and shake the filter to remove dust as it is described in above paragraph "CLEANING FILTERS".
4. Close the grille for air-outlet.

Care and cleaning

Switch off the appliance and pull out the plug from the power supply.

Clean the outside of the appliance with a soft cloth with mild detergent. Harsh or abrasive detergent will damage the outside surface. Never immerse the appliance or cord into water and other liquids.

CAUTION:

When the dust bin is full and reaches the MAX indication, you should empty the dust bin. Never use the appliance without filters. Do not use a washing machine to rinse filters. Do not use a hair drier to dry them.

STORAGE

Parking system serves for parking suction tube/floor brush during short-term interruptions during cleaning.

For personal/household use only!



IMPORTANT INFORMATION FOR CORRECT DISPOSAL OF THE PRODUCT IN ACCORDANCE WITH EC DIRECTIVE 2002/96/EC.

At the end of its working life, the product must not be disposed of as urban waste. It must be taken to a special local authority differentiated waste collection centre or to a dealer providing this service. Disposing of a household appliance separately avoids possible negative consequences for the environment and health, deriving from inappropriate disposal and enables the constituent materials to be recovered to obtain significant savings in energy and resources. As a reminder of the need to dispose of household appliances separately, the product is marked with a crossed-out wheeled dustbin.