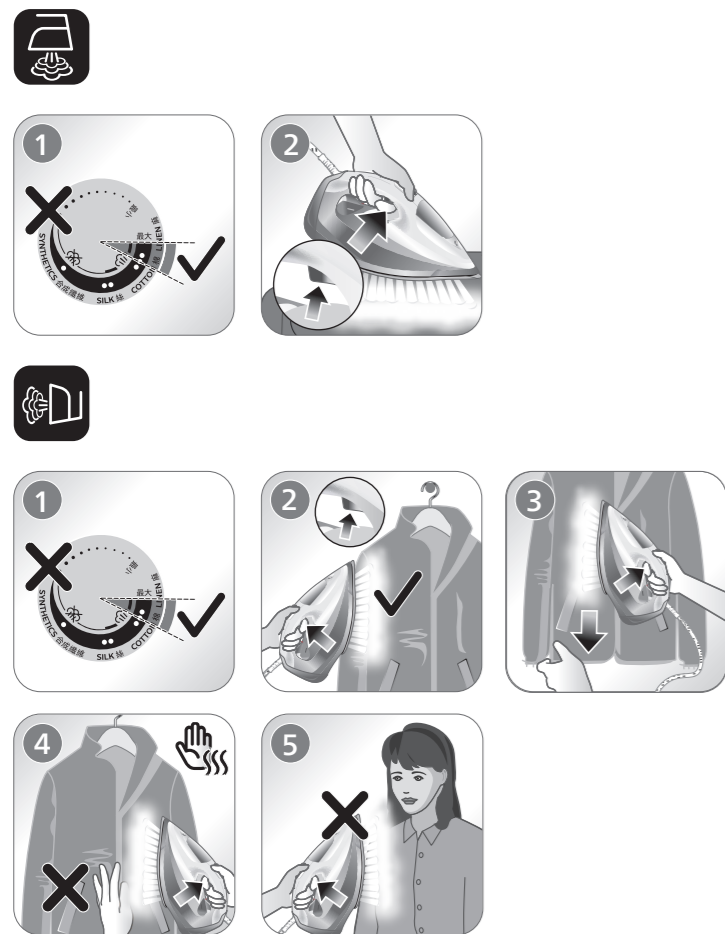


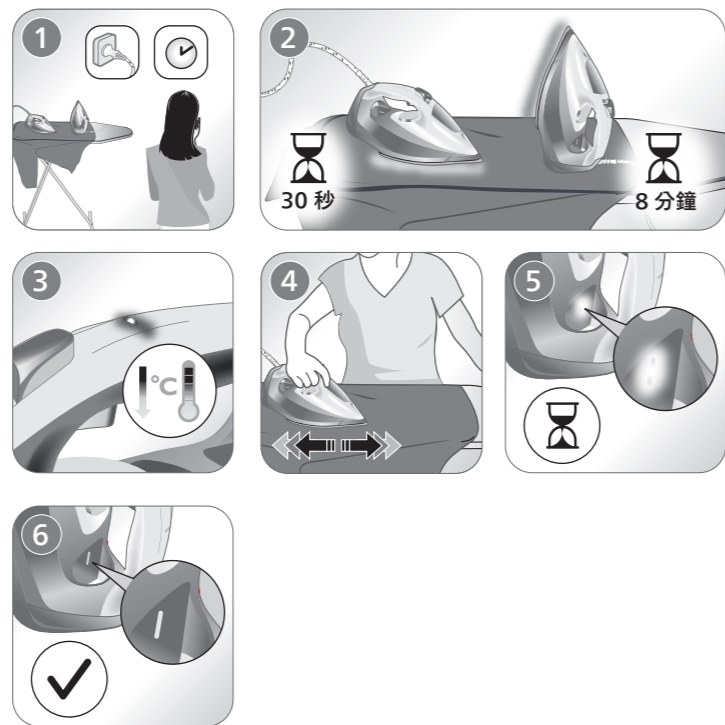
**2** 

[www.philips.com/support](http://www.philips.com/support)



**3** **Auto shut off** **自動斷電**

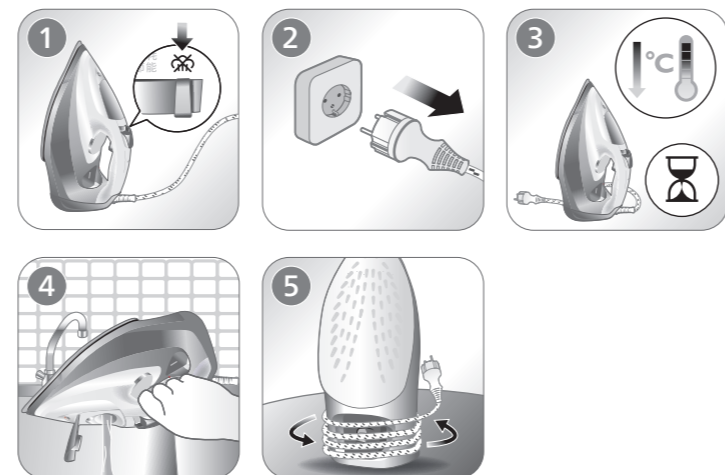
DST703X, DST704X  
DST705X, DST706X



EN Specific types only  
TC 僅特定類型

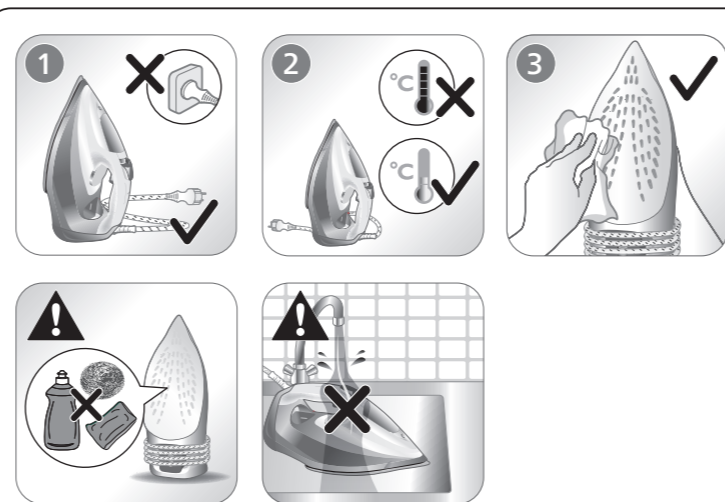
**4** 

[www.philips.com/support](http://www.philips.com/support)



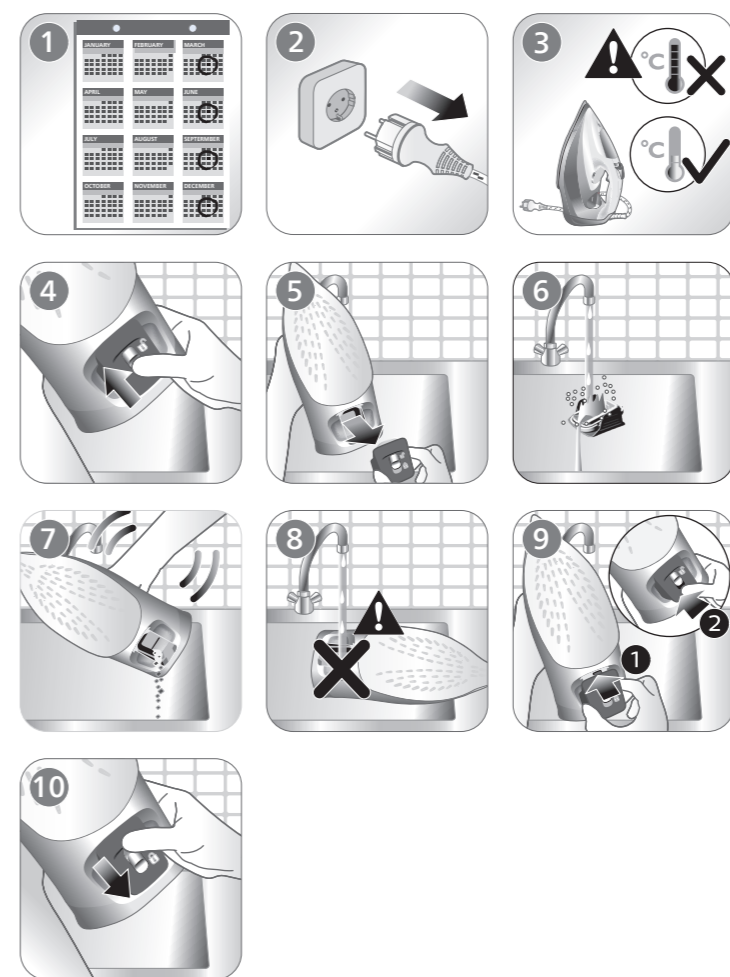
**5** 

[www.philips.com/support](http://www.philips.com/support)



**6** **QUICK CALC RELEASE** **快速除鈣** **3個月**

[www.philips.com/support](http://www.philips.com/support)



**PHILIPS**

Azur 7000 series

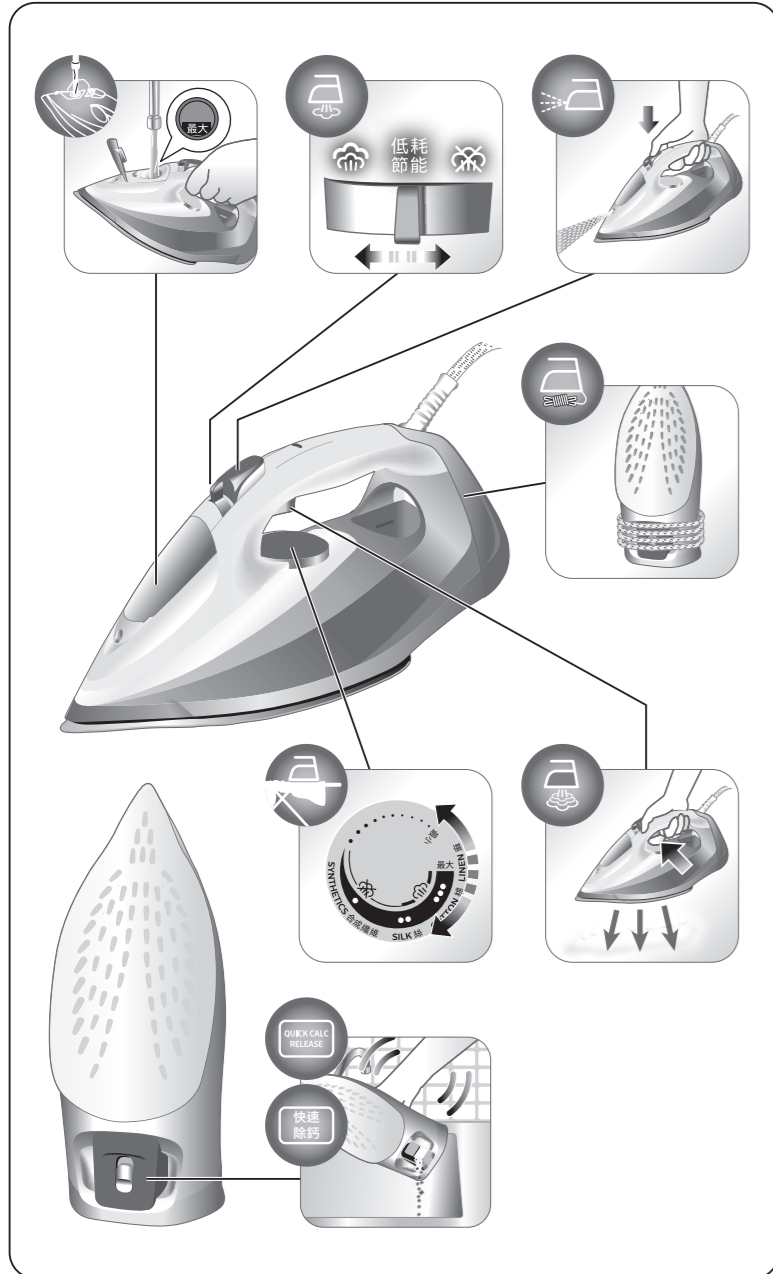


EN User manual

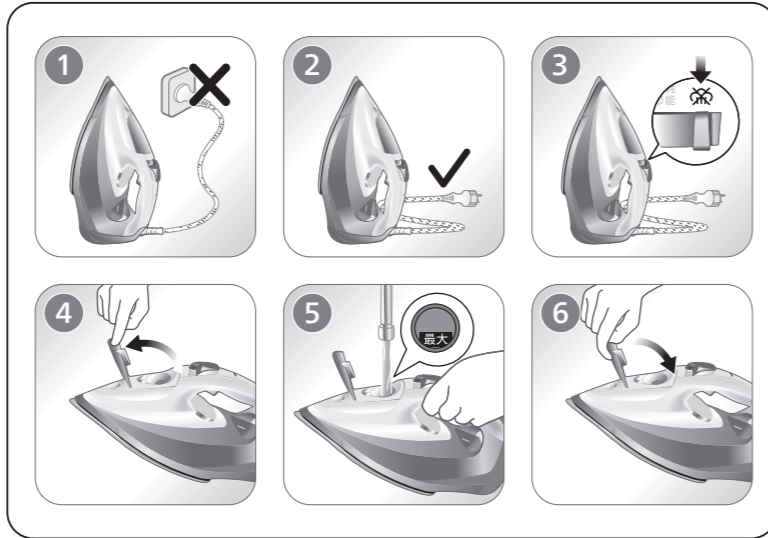
TC 使用手冊



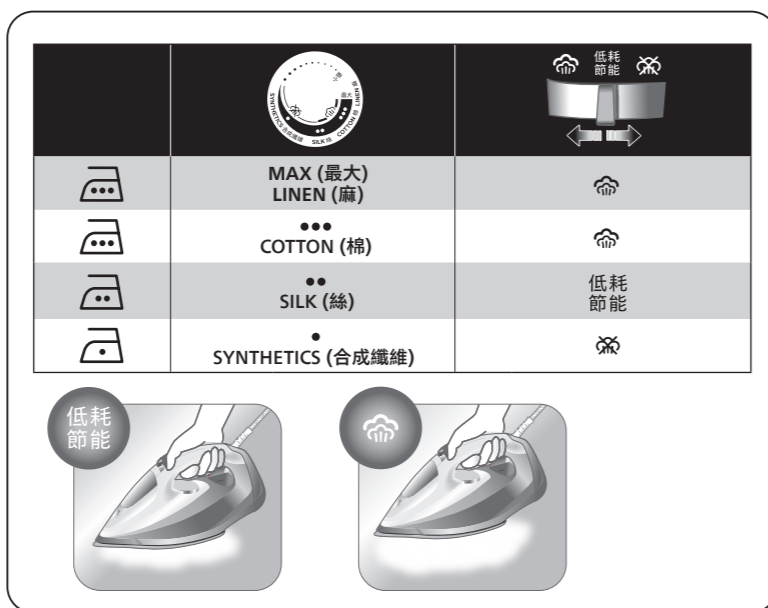
[www.philips.com/support](http://www.philips.com/support)



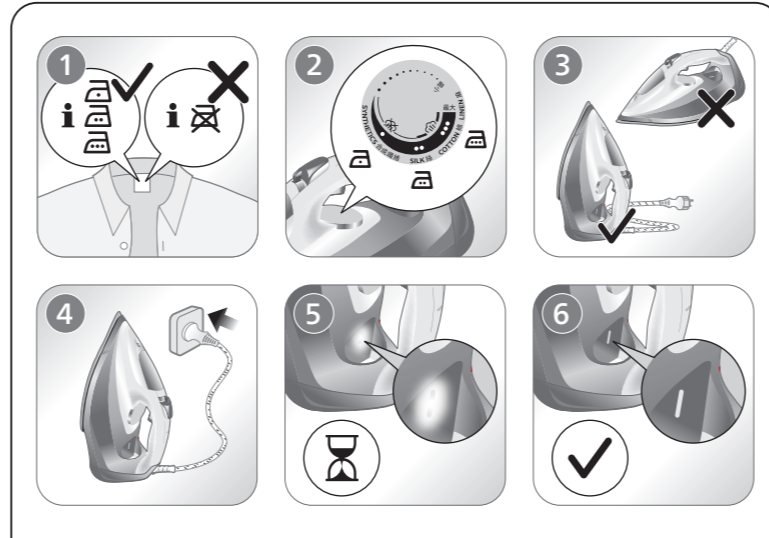
[www.philips.com/support](http://www.philips.com/support)



[www.philips.com/support](http://www.philips.com/support)



[www.philips.com/support](http://www.philips.com/support)



### EN Preparing for use

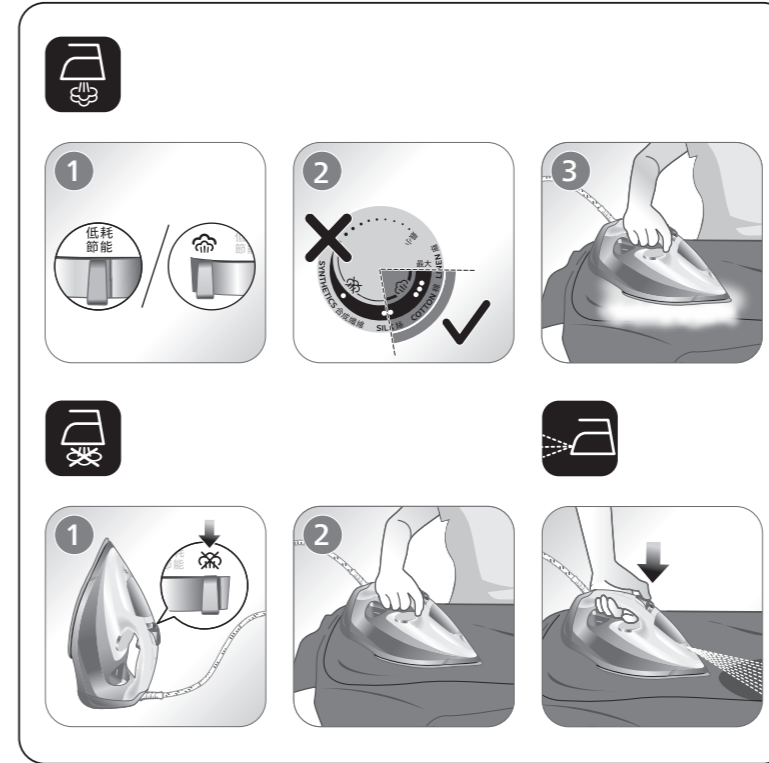
Smoke can be visible during the first use, and it is normal. This ceases after a short while.

### TC 使用前準備

第一次使用時可能有煙霧，這是正常現象，一下子就會消失。



[www.philips.com/support](http://www.philips.com/support)



設備名稱：飛利浦蒸氣熨斗  
Equipment name: 飛利浦 (Type):

單元 Unit	限用物質及其化學符號 Restricted substances and its chemical symbols					
	鉛 Lead (Pb)	汞 Mercury (Hg)	鎘 Cadmium (Cd)	六價鉻 Hexavalent chromium (Cr <sup>6+</sup> )	多溴聯苯 Polybrominated biphenyls (PBB)	多溴二苯醚 Polybrominated diphenyl ethers (PBDE)
電源線組	-	0	0	0	0	0
電源板	-	0	0	0	0	0
上蓋	0	0	0	0	0	0
水箱	-	0	0	0	0	0
溫度旋鈕	0	0	0	0	0	0
加熱元件	0	0	0	0	0	0

備考1: "超出0.1 wt%"及"超出0.01 wt%"係指限用物質之百分比含量超出百分比含量基準值。  
Note 1: "Exceeding 0.1 wt%" and "exceeding 0.01 wt%" indicate that the percentage content of the restricted substance exceeds the reference percentage value of presence condition.  
備考2: "0"係指該項限用物質之百分比含量未超出百分比含量基準值。  
Note 2: "0" indicates that the percentage content of the restricted substance does not exceed the percentage of reference value of presence.  
備考3: "-"係指該項限用物質為排除項目。  
Note 3: The "-" indicates that the restricted substance corresponds to the exemption.



© 2022 Philips Domestic Appliances Holding B.V. All rights reserved. 4239.001.2388.1 (11/10/2022)

