

Deerma Mini Juice Blender

Enjoy healthy and fresh fruit juice

It is so perfect to drink a bottle of fresh fruit juice after the sleepy noon or sport.
Wireless design can be squeezed juice automatically and
so easy to enjoy the delicious juice.

Operation Instructions Manual of Mini Juice Blender

DEM-NU06

Read the manual carefully before use!

Precautions

- Please carefully read the operation instructions of the manual and keep it properly for future reference.
- Please strictly observe the following signs. Ignoring the signs or incorrect operations may cause major accidents or personal injuries. Therefore, please follow the tips below.
 1. Do not open the cup cover when it is operating, and do not touch the rotating parts at any time;
 2. When it is stuck by food during stirring, please turn off the power, remove the stuck hard objects and restart it;
 3. The solid materials in the cup shall not exceed 1/2 of cup volume. Please cover the cup cover tightly when using;
 4. The product should not be used for meat mincing, nor shall it be used for grinding nuts or beans. Direct grinding may cause failure and shorten the service life.
 5. Please drink it in time. It is forbidden to store the juice in the cup for more than 6 h or pour it out overnight. Food will rot and cause peculiar smell in the cup.
 6. Please carefully read the instructions before use.
 7. Do not use the product for other purposes beyond its functional scope.
 8. Please stop using the product when USB charging cable and plug are damaged or fail.
 - 9 It is forbidden to touch the plug with wet hands. Please hold the plug and do not pull the USB charging cable when pulling out the plug.
 10. Do not use boiling water for cleaning.
 11. Make sure the port is correct before use. The output voltage of the charger or power bank is 5 V.
 12. Children are not allowed to use the product, please put it out of reach of children and keep it properly.
 13. The USB charging cables shall not contact sharp corners or high temperature surfaces.
 14. Do not immerse the product in water or any other liquid.
 15. The base of the product cannot be immersed in water for cleaning. Before cleaning, cover the silicone seal of the USB charging port to prevent water leakage. If the silicone seal of the USB charging port is damaged or lost, please stop using it and contact the after-sales personnel to repair it, so as to avoid short circuit. During cleaning, do not directly contact the blade by hands to prevent accidental injury.
 16. The fruit cubes should not be too large. The recommended size shall not be greater than 20 mm*20 mm, so as to avoid stuck fruit cubes in the cup, which cannot be crushed.
 17. The best juice squeezing effect can be achieved when the mini juice blender is fully charged. Please charge it in time when there is low power. Do not use the mini juice blender when charging;
 18. It is forbidden to start the mini juice blender in inflammable and explosive environment;
 19. It is forbidden to extend any part of the limb into the undetached cup to contact the blade;
 20. As the blade is sharp, if the blade is damaged or the quality of squeezed juice is not good after the blade is blunt, contact the after-sales personnel to replace the blade that needs to be replaced. The user is forbidden to replace the blade;
 21. The product has locked-rotor protection. If the locked-rotor occurs consecutively more than 4 times in 3 min or the 20A workload lasts for 10 s, it will be shut down for 5 min, and the red light will flash when the shutdown protection is tapped twice for starting.

HOUSEHOLD USE ONLY

DO NOT IMMERSE IN WATER

SAVE THESE INSTRUCTION

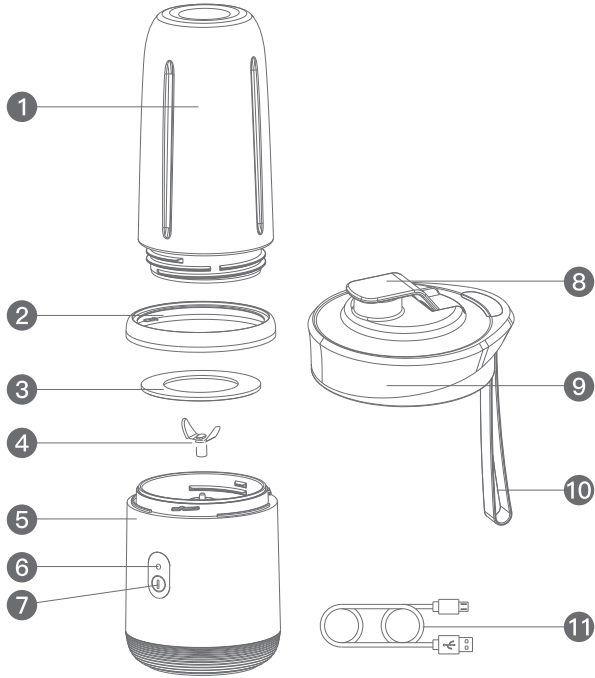
Precautions on Battery

1. The user cannot replace the battery during normal use;
2. Treatment method for battery liquid leakage: As the battery liquid is highly corrosive, do not let it touch skin or clothes and wipe it with dry cloth once it is found.
3. The battery must be removed from the product before disposing of the product. The battery shall be removed in the following steps:
 - Remove the screws at the bottom of the product and separate the upper and lower housings of the product;
 - ② Remove the internal wires and then the battery, take out the battery.
4. When taking out the battery, the product must be powered off;
5. The battery shall be disposed of safely.

Warning

1. Do not open the cup cover when the product is running, and do not touch the rotating part at any time;
2. It is forbidden to extend any part of the limb into the undetached cup to contact the blade;
3. It is forbidden to store the fruit juice in the cup for more than 6 h, as the food will rot and cause peculiar smell in the cup;
4. Do not use boiling water for cleaning;
5. Do not immerse the product in water or any other liquid. The base of this product cannot be immersed in water for cleaning. Before cleaning, cover the silicon seal of USB charging port to prevent water seepage;
6. Do not directly contact the blade with your hands during cleaning to prevent accidental injury;
7. It is forbidden to start the mini juice blender in inflammable and explosive environment;
8. As the blade is sharp, if the blade is damaged or the quality of squeezed juice is not good after the blade is blunt, contact the after-sales personnel to replace the blade that needs to be replaced. The user is forbidden to replace the blade;
9. Turn off the power switch and disconnect the power supply before replacing accessories or touching moving parts;

Diagram of Product Structure



Note: goods in kind prevail

1 Transparent cup

2 Ornamet ring

3 Seal ring

4 Blade

5 Main body

6 Indicator light

7 Key

8 Juice spout cover

9 Cup cover

10 Handle

11 USB cable

Product Parameters

Name	Model	Charging voltage	Operating power
Mini Juice Blender	DEM-NU06	5V==	140W
Operating voltage	Charging current	Capacity	
7.4V==	1A	400 mL	

Features

1. The cup body is made of food grade PCTG;
2. The product is designed with the built-in safety protection switch. Once the cup body is unscrewed, the motor shuts down, with high safety performance;
3. The SUS304 stainless steel blade is adopted, and the screw blade shaft is used, which is fixed on the motor shaft to prevent the motor blade from falling off, making it safe and reliable;
4. The contact switch is adopted, with small strength, good contact and sensitive switching.
5. The portable multi-purpose cup can be used for cooking and travel;
6. The cup body adopts the spiral-tooth design, which is convenient for disassembly and cleaning;
7. It has two built-in 1500 mAh high-capacity 3.7 V rechargeable batteries.

Preparation Methods

Mango milkshake



1. Cut mango into small cubes;
 2. Add 200 ml milk;
 3. Tilt down by 60° and start stirring for about 30~70 s while shaking by hand.
-

Banana puree



1. Cut banana into small cubes;
 2. Add 200 ml milk/purified water and 200 ml honey;
 3. Tilt down by 60° and start stirring for about 30~70 s while shaking by hand.
-

Apple yogurt



1. Add apple and 200 ml yogurt;
 2. Tilt down by 60° and start stirring for about 30~70 s while shaking by hand.
-

Kiwi fruit juice with honey



1. Add kiwi fruit and 15 cc honey;
 2. Add 10 cc lemon juice and 200 cc cold boiled water;
 3. Tilt down by 60° and start stirring for about 30~70 s while shaking by hand.
-

Mixed juice with carrot and orange



1. Add carrot and orange;
 2. Add 10 cc lemon juice, 200 cc cold boiled water and 15 cc honey;
 3. Tilt down by 60° and start stirring for about 30~70 s while shaking by hand.
-

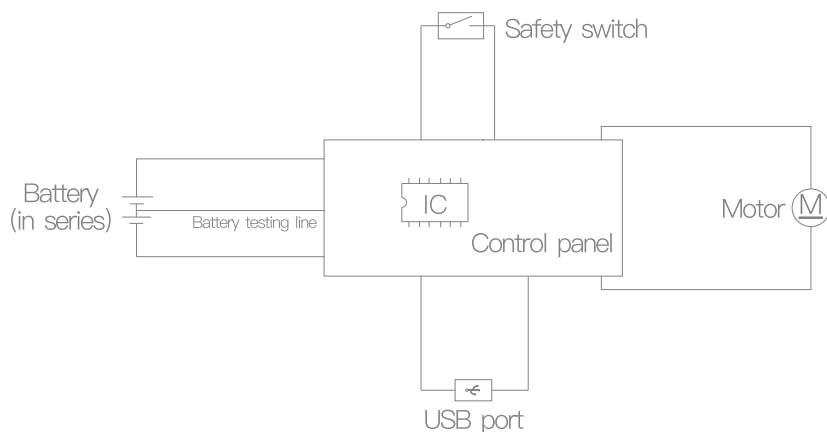
Note: If it stops after starting stirring, it can be restarted.

When making the fruit juice, add water before crushing the fruit cubes.

When making the fruit juice, do not stop stirring until fruit cubes are crushed.

Circuit Diagram

It is for reference only and subject to updates without prior notice. Goods in kind prevail, and we reserve the right of final interpretation.



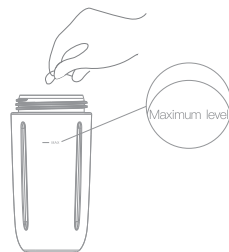
Packing List

Name	Quantity
Main body	1
Cup cover	1
Operation instructions manual	1
USB cable	1

Operation Instructions

1 Add fruits and drinks

Cut the fruit into small cubes of thumb size (slightly soft fruit can be cut into larger cubes), and put the cut cubes of fruit into a cup, generally not more than half of the cup's capacity. Add purified water or cold boiled water into the cup until the fruit cubes are immersed;



2 Invert the main body and screw it onto the cup body

When the transparent cup is tightened with the main body, press down the transparent cup to hold down the safety switch. After power-on, the blue light flashes twice and the buzzer rings for 1 s;



3 Double click the switch button

Click the switch twice continuously (with 1 s interval between clicks) to start. If the motor gets stuck when there is sufficient power, remove the stuck object, turn the cup upside down, then double click the switch and restart it. When working, the blue light will be on for a long time, and the buzzer will ring 2 times and last for 40 s each time;



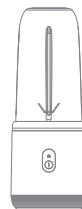
4 Shake the cup

After the motor is started, shake the cup horizontally to allow the blade to have a short-time contact with the fruit cubes and crush them;

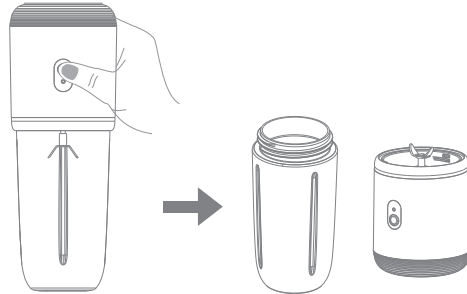


5 Finish fruit juice blending

Due to the different texture of fruit, observe the blending degree of fruit cubes during operation, and press to stop if deemed appropriate. Press and stop manually, the light will go out, and the buzzer will sound 3 times. Press the switch lightly, the blue indicator light flashes twice to indicate power-on, and the buzzer will sound for 1 s. The red indicator light flashes for 10 s to indicate insufficient power and the buzzer rings 5 times.



- ⑥ After the fruit juice is made, invert the product and remove the main body for drinking. When the cup body is detached from the main body, turn off the safety switch to enter the power-off state, the red light flashes for 10 s, and the buzzer sounds 3 times. Under the power-off state, only the red light flashes for 10 s and the buzzer rings 5 times. After use, please clean it in time and sterilize it with light salt brine to avoid bacteria growth. Before cleaning, cover the silicone seal of USB charging port to prevent water seepage.



⑦ Charging

The battery is a rechargeable battery. Insert the mobile phone charger into the USB charging port. The flashing blue indicator light in the middle indicates that the battery is being charged. When the battery is fully charged, the indicator light stops flashing and enters a long-on state.

If the program detects any battery damage, the red indicator light will flash.

Note: The product cannot work when charging. Only the 1A or above charger can charge the battery more quickly.

